

AUTUMN SEASON AT WILTON PARK

Presenting Perpetual Now II by Scott Eaton, plus Eye of the Dream by David O'Reilly

Perpetual Now II is co-presented by Meta Open Arts and Fundamental AI Research (FAIR) at Meta, where the work was developed while in residence.

IPUT Real Estate Dublin's Living Canvas autumn programme proudly presents the premiere of Scott Eaton's Perpetual Now II, and a new version of Eye of the Dream for Living Canvas by David O'Reilly. These are joined by works from leading Irish artists exploring migration, biodiversity, and the literary legacies of the Grand Canal.

The season includes work by Alan Gilsenan and Dorothy Cross with Lisa Hannigan, Anita Groener, Mark Garry, Mark Clare, and works from The Poetry Project. We are also delighted to present weekend morning family animation sessions with Conor Finnegan's, Fear of Flying.

	Monday	Tuesday	Wednesday	Thursday	Friday	Saturday	Sunday
08.00 - 12.00	The Poetry Project	Anita Groener	The Poetry Project	David O'Reilly	Mark Clare	Conor Finnegan	Conor Finnegan
12.00 - 16.00	Mark Clare	Dorothy Cross / Alan Gilsenan	Mark Clare	Mark Garry	The Poetry Project	Mark Garry	Scott Eaton
16.00 - 20.00	Let Me Come Inland Always / Canal Water	David O'Reilly	Scott Eaton	Dorothy Cross / Alan Gilsenan	Scott Eaton	David O'Reilly	Anita Groener
20.00 - 22.00	Anita Groener	Mark Garry	Dorothy Cross / Alan Gilsenan	Scott Eaton	David O'Reilly	Scott Eaton	David O'Reilly



A CULTURAL INITIATIVE BY
IPUT REAL ESTATE
DUBLIN

SUPPORTED BY:

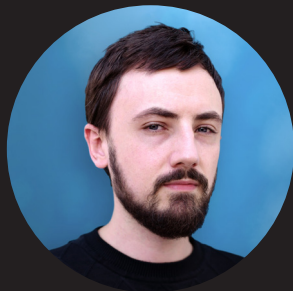


FEATURED ARTISTS



SCOTT EATON

Scott Eaton is an American artist residing in London. His work explores the human condition and our increasingly complex relationship with technology, by transforming and remixing our data into artistic experiences. His art and designs have been featured in Wired Magazine, GQ, Vogue, Vanity Fair, The New York Times, and shown and collected internationally. In addition to his own projects, Scott frequently collaborates with other artists, studios and research labs, clients include: Pixar, Disney, Industrial Light and Magic, Nvidia, Meta and others. Scott studied at MIT and the Royal College of Art.



DAVID O'REILLY

Kilkenny born, David O'Reilly is a multidisciplinary artist based in Los Angeles. His work spans animation, video games, and interactive art. Beginning his career as an animator with Cartoon Saloon, he went on to create numerous short films that inspired a wave of lo-fi digital aesthetics. In collaboration with Spike Jonze, he created the holographic video games in the film Her. He then went on to develop interactive nature simulations such as Mountain and the universe-scale Everything. His pioneering AR works have received over 3 billion views across social media.



THE POETRY PROJECT

Originally commissioned as part of the Culture Programme of Ireland's EU Presidency in 2013, The Poetry Project paired contemporary Irish poetry with videos by contemporary Irish artists. The Project was viewed over the course of the Presidency by people in more than one hundred countries. We are delighted to present six of these for our Autumn Programme on Living Canvas.

Artists: Fergal McCarthy, Poppy Hunt, Jasper Wood, Cléa van der Grijn, Kate Gordon, Padraig Cunningham. Poets: Colm Breathnach, Theo Dorgan, Liam O Muirthile, Vona Groarke, Ailbhe Ní Ghearbhuigh, Peter Fallon.

The Poetry Project was a partnership between The Kinsale Arts Festival, The Royal Hibernian Academy and Poetry Ireland. It was supported by Culture Ireland and Foras na Gaeilge.

image from Niesje by Clea van der Grijn.



CANAL WATER

Anthony Woods to a text by Colm Tóibín

Canal Water was commissioned by IPUT Real Estate.

Multi award winning writer Colm Tóibín is one of the best known names in Irish literature. A novelist, short story writer, essayist, playwright, journalist, critic and poet, he is also an educator, and was called "a champion of minorities" by then Arts Council Director, Mary Cloake.

Anthony Woods is a much sought after photographer and videographer, based in Dublin. His film Canal Water is an IPUT Real Estate commission, to mark the occasion of Words at Wilton Park.



DOROTHY CROSS / ALAN GILSENAN

Dorothy Cross was born in Cork. Her work ranges from object to opera: working with sculpture, photography and video. Her work examines the relationship between humans and the natural world - considering what is sacred and maligned, and looking at time, transience and transformation.

Alan Gilson is an award-winning Irish writer, film-maker and theatre director. His very diverse body of film-work extends across documentary, feature films and experimental work.



A CULTURAL INITIATIVE BY
IPUT REAL ESTATE
DUBLIN

iput.com/living-canvas
[#livingcanvasdublin](https://twitter.com/livingcanvasdublin)

FEATURED ARTISTS



ANITA GROENER

Anita Groener is a visual artist who makes drawings, site-specific immersive installations, films, and animations that she shows internationally. Approaching the world and time as networks of events, the artist asks what it is to be human today. During the last several years she has been concentrating on urgent stories and patterns of migration, their archetypal and psychological resonances. Material metaphors, symbolic representation and the aesthetic in her work speak to the fragility of present day life and society.



MARK GARRY

Mark Garry is an artist, curator, writer, educator and occasional musician. His practice is research driven and each body of work engages with a new form of conceptual criteria with each exhibition opportunity. Mark's practice is multifaceted and incorporates a variety of media, mechanisms and material interests. In many instances a number of these elements are combined to form installations. Mark has held exhibitions at museums and art venues in Europe, North America, Australia, East Asia and he represented Ireland at the 2005 Venice Biennale.



MARK CLARE

Over the past 25 years Mark Clare has developed a research-led practice employing a variety of media including sculpture, video, animation, sound, performance, and photography. Throughout his career he has participated in numerous residencies and projects and has exhibited extensively, nationally and internationally; working alongside international curators and artists. His recent work explores issues relating to the impact of human induced climate change and the potential of science, philosophy, and aesthetics to enrich his thinking on issues related to climate collapse and international policies, in order to produce work that keeps our attention focused on what's going on in the environment.



CONOR FINNEGAN

Conor is an animation writer and director based in Dublin. He is represented for commercial work with Nexus studios in London where he has directed work for clients such as Macy's, Target, Android, Oatly and others.



A CULTURAL INITIATIVE BY
IPUT REAL ESTATE
DUBLIN

IPUT, creating space for arts and culture in the city

Living Canvas at Wilton Park, Dublin 2 is a public art initiative in partnership with Dublin City Council. It is the place to enjoy and discover both Irish and International artists leading the field in film and digital art.

Viewing points, audio and accessibility

Living Canvas is on the banks of the Grand Canal between Baggot Street Bridge and Leeson Street Bridge. Viewing points on both sides of the Canal.

Scan the QR code to hear accompanying audio via your smartphone.

The Living Canvas Screen is publicly situated, free and fully accessible. Please note these are public footpaths and roadways, so be aware of pedestrians, bicycles and vehicle traffic while viewing.

iput.com/living-canvas
[#livingcanvasdublin](https://twitter.com/livingcanvasdublin)

SUPPORTED BY:



ALGORITHM

